



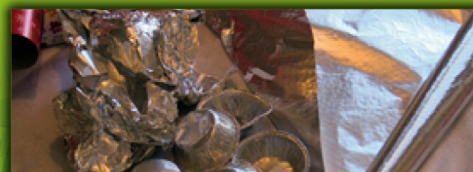
Advent Calendars

- REDUCE** – avoid single use calendars
REUSE – buy a reusable advent calendar and add homemade sweets and treats
RECYCLE –
- Card packaging
 - Foil (scrunched into a ball)
 - Plastic tray



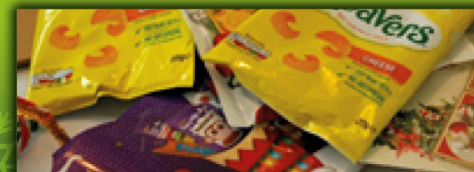
Cards

- REDUCE** – send an e-card
REUSE – old cards can be reused as gift tags
RECYCLE –
- Cards with **no** glitter, stuck on decoration or shiny bits
 - Cards with glitter, stuck on decoration or shiny bits



Aluminium Trays & Packaging

- REDUCE** – avoid single use trays
REUSE – use a reusable roasting tin
RECYCLE –
- Foil trays (rinsed to remove grease)
 - Foil wrappers (scrunch into a ball)
 - Foil wrappers (plastic lined)



Food Packaging

- REDUCE** – try options with less packaging
RECYCLE –
- Crisp packets
 - Film wrappers
 - Sweet wrappers



Wrapping Paper

- REDUCE** – gift experiences rather than stuff
REUSE – explore reusable gift wrapping
RECYCLE –
- Brown paper
 - Any other wrapping paper
 - Tape



Leftovers

- REDUCE** – plan your portions, visit www.lovefoodhatewaste.com/portion-planner
REUSE – be creative and make your leftovers into something new
RECYCLE –
- Turkey / chicken carcass
 - Fruit / veg peelings
 - All cooked / uncooked food leftovers



Mince Pies

- REDUCE** – make mince pies at home
REUSE – make leftovers into something new
RECYCLE –
- Leftover mince pies
 - Foil cases (scrunch together into a ball)
 - Cardboard box
 - Plastic tray



Sweet Tubs

- REDUCE** – make sweets & treats at home
REUSE – tubs & tins can be reused for storage
RECYCLE –
- Foil wrappers (scrunch together into a ball)
 - Metal / plastic tins
 - Plastic wrappers



Online delivery packaging

- REDUCE** – buy local
REUSE – use cardboard for crafts or upcycle into storage around the house
RECYCLE –
- Cardboard
 - Plastic envelopes
 - Polystyrene
 - Bubble wrap



Christmas Trees

- To help you decide between a real or fake tree, visit www.recycledevon.org/christmas-trees-real-vs-fake
RECYCLE –
- Real Christmas Tree (6ft or less)
 - Real Christmas Tree (more than 6ft)
 - Fake Tree (at end of life)



Drinks containers

- REUSE** – glass bottles can be used as vases or insert fairy lights to make a light feature
RECYCLE –
- Plastic bottles (lids on)
 - Juice cartons
 - Bottle corks
 - Glass bottles
 - Metal screw tops



Decorations

- REDUCE** – make your own at home
REUSE – look for sustainable alternatives, avoid buying new decorations every year
RECYCLE –
- Broken fairy lights
 - Crackers with **no** glitter, stuck on decoration or shiny bits
 - Crackers with glitter, stuck on decoration or shiny bits
 - Tinsel / damaged baubles
 - End of life homemade decorations (if painted or treated with preservative)